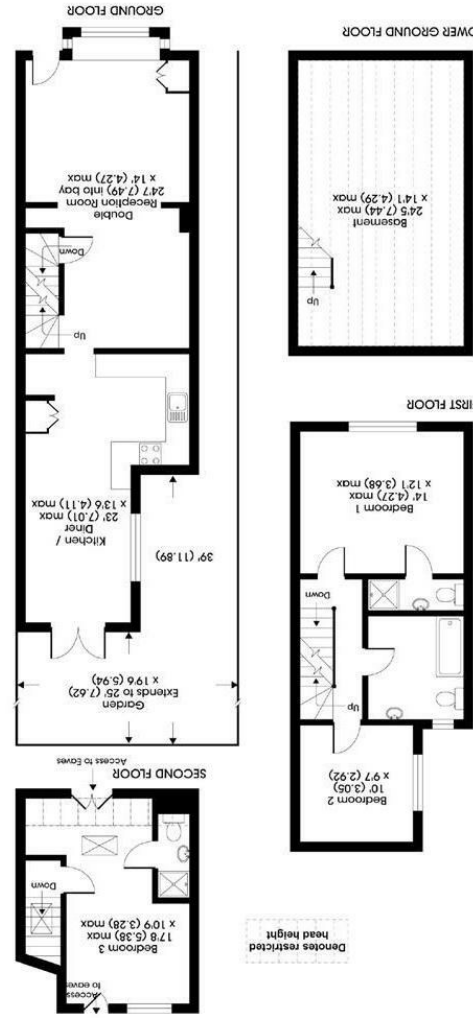
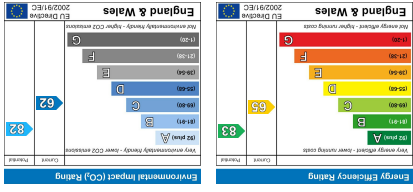


All appliances listed in these details are only 'as seen' and have not been tested by Gibson Lane, nor have we sought certification of warranty or service, unless otherwise stated. Measurements, areas and distances are approximate. Floor plans and photographs are for guidance purposes only and must not be relied upon for any purpose. These details are offered on the understanding that all negotiations are made through this company. Neither these particulars, nor verbal representations, form part of any offer or contract, and their accuracy cannot be guaranteed.



APPROX. GROSS INTERNAL FLOOR AREA 1270 SQ FT 117.9 SQ METRES  
 (EXCLUDES RESTRICTED HEAD HEIGHT)

34 Richmond Road  
 Kingston upon Thames  
 Surrey  
 KT2 5ED  
 www.gibsonlane.co.uk  
 Tel: 020 8546 5444





Acre Road  
 Kingston Upon Thames KT2 6EN



## Acre Road

Kingston Upon Thames KT2 6EN

Asking Price £750,000

An attractive Victorian halls adjoining semi detached house situated on this sought after North Kingston Road.

### Description

An attractive halls adjoining Victorian house, presenting an impressive interior approaching 1300 sqft. The ground floor features a Basement for storage, a generous 24' double reception room which leads to a stunning 23' Kitchen/Diner fitted with a range of high quality appliances and offering direct access to the Southerly aspect rear garden. The upper floors provide three double bedrooms (2 with ensuite) and a spacious family bathroom. To the front there is the distinct advantage of off street parking. Internal viewings are highly recommended.

### Situation

Acre Road is a popular residential street ideally situated in the sought after North Kingston area. The property is conveniently positioned for Richmond Park, River Thames and Kingston station giving direct access into Waterloo and the A3 which serves both London & the M25. Kingston town centre with its array of shops, restaurants and bars is a short distance away. The standard of schooling in the immediate area is excellent within both the private and state sector.

**Tenure:** Freehold

**Local Authority:** Kingston Upon Thames

